

How to Upgrade the Asus 901 with a SaberTooth™ SSD

- Why Upgrade?

SaberTooth SSDs deliver substantially faster performance than the default drive in Asus Eee PC S101, 900, 900A and 901 netbooks. You can enjoy lightning fast bootup, shutdown and application load speeds. Get the performance that will open up your Eee PC to applications you couldn't run before.

Other major benefits of SaberTooth SSDs is that they are lighter weight, more rugged and reliable and use less power than traditional hard drives because they have no moving parts.



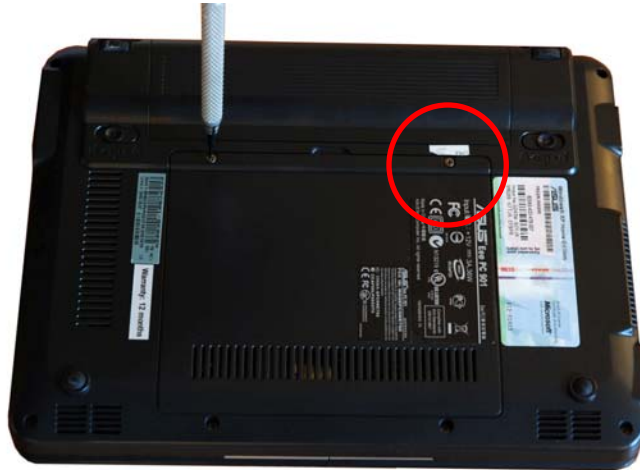
- Where can I buy SaberTooth SSDs?

SaberTooth SSDs are available worldwide through Amazon and TigerDirect.

- How to Upgrade?



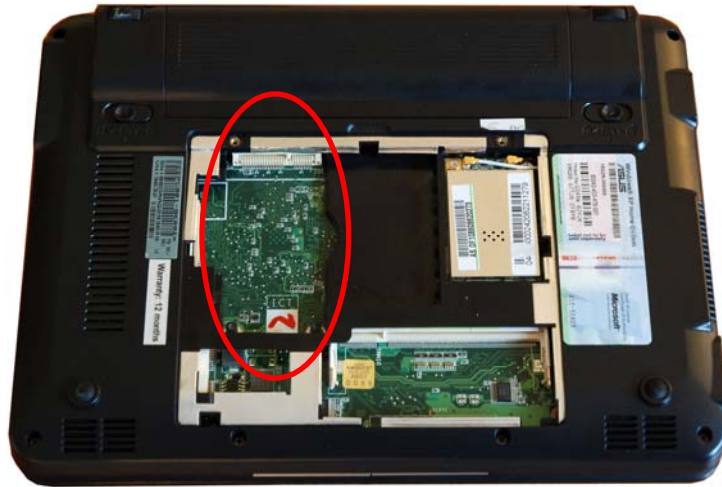
1. *Shut down your computer. Make sure it is completely shut down and the power is off. Unplug the computer.*



2. *Locate the removable backplate on the bottom of the Eee PC. Unscrew the two retention screws.*



3. *Gently pry open the backplate with your fingers. Even after the screws are removed the backplate is still snapped in place.*
4. *Locate the SSD and carefully remove the two retention screws. Be careful not to drop the screws into the computer.*



5. The stock SSD will pop up on its own after the screws are removed. Pull out the stock SSD.

6. Slide the SaberTooth SSD into the Mini PCIe slot, making sure the key in the SSD lines up with the key in the connector. Slide it in at an angle, then press it down.



7. Screw in the retention screws to secure the SaberTooth SSD in place.



8. *Snap the backplate back on, and screw in the two retention screws.*



9. *Turn on the computer, install your operating system and applications, and enjoy faster performance!*

* * *